

MILL BROOK INDUSTRIES, INC.

MBI's Seating incorporates features that give you comfort, durability, value, and style.

135K

Armed Upholstered Stack Chair

1" THICK CONTOURED BACK
1" THICK, HIGH DENSITY,
POLYURETHANE FOAM . STANDARD
ON OUR 134K/135K FOR EXTRA
COMFORT.

STEEL FRAME
STANDARD 3/4", 18-GAUGE STEEL,
SQUARE TUBING.

FRONT & REAR STRETCHER BARS
5/8" STRETCHER BARS KEEPS THE CHAIR
FRAME FROM TWISTING TO HELP INCREASE
THE CHAIRS WORKING LIFE.

NON-MAR NYLON GLIDES
CONSTRUCTED WITH A BLACK
NON-MAR NYLON, FOR INCREASED
FRAME & UPHOLSTERY PROTECTION
WHEN STACKING!

DUAL UNDER SEAT SUPPORT
DUAL UNDER SEAT SUPPORT STRAPS
ARE STANDARD FOR ADDED
STRENGTH AND SUPPORT!

**OPTIONAL VINYL UPHOLSTERED
ARMED CHAIR WITH 1" THICK SEAT
[135KV-1]**

2" THICK CONTOURED SEAT
2" THICK, HIGH DENSITY,
POLYURETHANE FOAM, , PROVIDING
YEARS OF COMFORT AND SERVICE!
(1" THICK CUSHION ALSO AVAILABLE)

**OPTIONAL SIDE CHAIR
1" THICK SEAT [134K-1]**

MILL BROOK INDUSTRIES, INC.

MBI's Seating incorporates features that give you comfort, durability, value, and style.

135K

Armed Upholstered Stack



Dimensions:

Overall

Width	20.75"
Depth	22"
Height	33"
Shipping Weight	17.7 lb

Seat

Thickness	2.5"
Width	16"
Depth	16"

Back

Width	16"
Height	16"



Warranty:

Structural Frame	5 Years
------------------	---------

Specifications:

- Frame: 3/4", 18-Gauge Square Steel Tubing
- Finish: Chrome is standard on all models
- Twenty Point Welds (Side Chair) Twenty-Eight Pint Welds (Arm Chair)
- 5/8" Front & Rear Stretcher Bars , for leg support
- Seat Foam: 2" Thick, High Density; Polyurethane Foam
- Back Foam: 1" Thick, High Density; Polyurethane Foam
- Stackable (Up to 10 Chairs Per Dolly)
- Meets CA 117-E Fire Codes
- Warranty: 5 Yr. Limited Manufacturer

Options

- 1" Thick Seat Foam
- Choice of Fabric or Vinyl
- Wood or Resin Arm Caps
- Matching Side Chairs [134K]
- Transport Dolly [KDY-DOLLY]



KDY-DOLLY
TRANSPORTS (8-10) CHAIRS



LMW-This product is covered by a limited manufacturer warranty only, exclusions may apply.

MILL BROOK INDUSTRIES, INC.

MBI's Seating incorporates features that give you comfort, durability, value, and style.

Standard Vinyl's/Fabrics



9301-Navy

Vinyls:

Material:
PVC Skin/Polyester Non-Woven Back

Weight:
18 oz. Per Lineal Yard

Flammability:
CA Bulletin 117, Section E; UFAC Class 1;
BIFMA Class F-1



9202-Ebony



9607-Red



9107-Yellow



9705- Green



9704-Hunter



9305-Blue



9402-Light Grey



9106-Brown



9703-Forest



9403-Grey



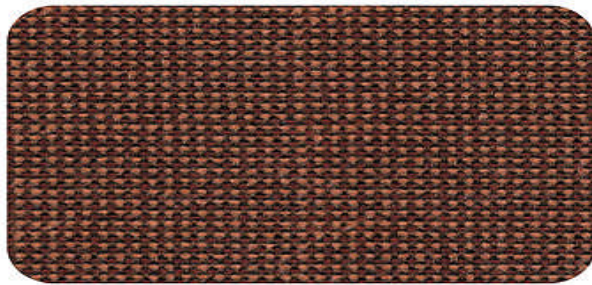
9102-Almond



9302-Wedgwood



9602-Port



1207-Wine

Guilford of Maine- Style 6600:

Material:
100% POLYPROPYLENE

Weight:
8.8 oz. Per Lineal Yard

Abrasion:
Exceeds 30,000 Double Rubs
(Wyzenbeek)

Flammability:
CA Bulletin 117, Section E;
CS-191-53, Class 1; BIFMA FF1-78;
NFPA 260-89; UFAC, Class 1

Treatment:
BLOCKaide™



1101-Spice Brown



1102-Brown



1202-Burgundy



1203-Dark Burgundy



1201-Cabernet



1302-Blue



1304-Navy Blue



1501-Grey



1502-Charcoal



1504-Black



1303-Denim



1405-Jade