

MILL BROOK INDUSTRIES, INC.

MBI's Seating incorporates features that give you comfort, durability, value, and style.

134K

Upholstered Stack Chair

1" THICK CONTOURED BACK

1" THICK, HIGH DENSITY, POLYURETHANE FOAM . STANDARD ON OUR 134K/135K FOR EXTRA COMFORT.

STEEL FRAME

STANDARD 3/4", 18-GAUGE STEEL, SQUARE TUBING.

FRONT & REAR STRETCHER BARS

5/8" STRETCHER BARS KEEPS THE CHAIR FRAME FROM TWISTING TO HELP INCREASE THE CHAIRS WORKING LIFE.

NON-MAR NYLON GLIDES

CONSTRUCTED WITH A BLACK NON-MAR NYLON, FOR INCREASED FRAME & UPHOLSTERY PROTECTION WHEN STACKING!



OPTIONAL VINYL UPHOLSTERED ARMED CHAIR WITH 1" THICK SEAT [135KV-1]

2" THICK CONTOURED SEAT

2" THICK, HIGH DENSITY, POLYURETHANE FOAM, , PROVIDING YEARS OF COMFORT AND SERVICE! (1" THICK CUSHION ALSO AVAILABLE)

DUAL UNDER SEAT SUPPORT

DUAL UNDER SEAT SUPPORT STRAPS ARE STANDARD FOR ADDED STRENGTH AND SUPPORT!



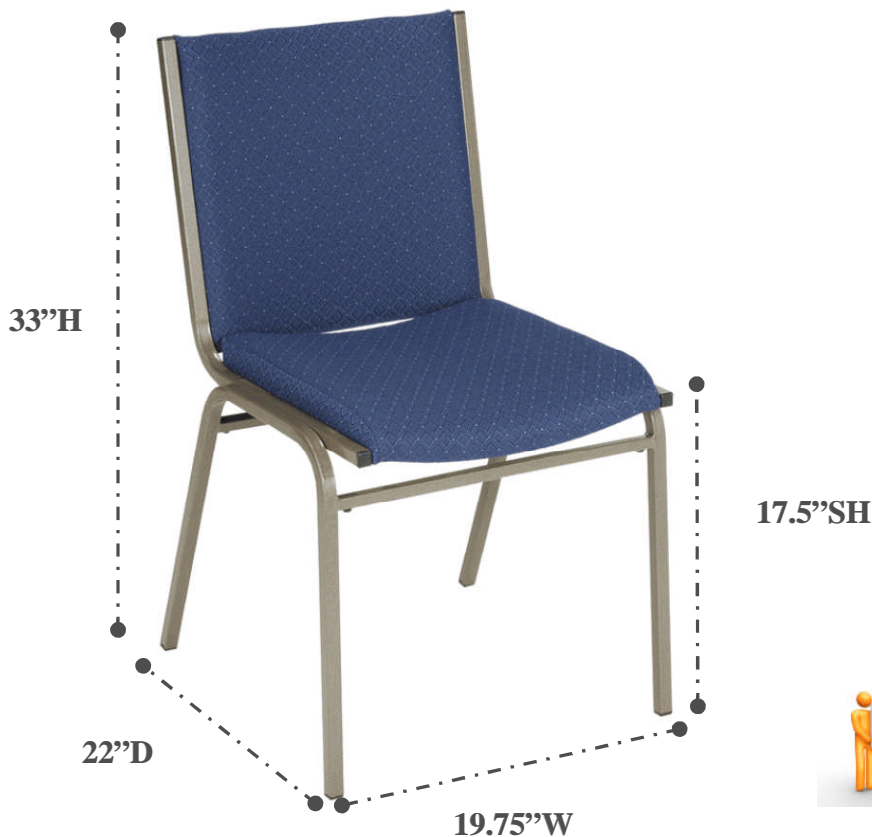
OPTIONAL 1" THICK SEAT [134K-1]

MILL BROOK INDUSTRIES, INC.

MBI's Seating incorporates features that give you comfort, durability, value, and style.

134K

Upholstered Stack Chair



Dimensions:

Overall

Width	19.75"
Depth	22"
Height	33"
Shipping Weight	15.7 lb

Seat

Thickness	2.5"
Width	16"
Depth	16"

Back

Width	16"
Height	16"

Warranty:

Structural Frame	5 Years
------------------	---------



Specifications:

- Frame: 3/4", 18-Gauge Square Steel Tubing
- Finish: Chrome is standard on all models
- Twenty Point Welds (Side Chair) Twenty-Eight Pint Welds (Arm Chair)
- 5/8" Front & Rear Stretcher Bars , for leg support
- Seat Foam: 2" Thick, High Density; Polyurethane Foam
- Back Foam: 1" Thick, High Density; Polyurethane Foam
- Stackable (Up to 10 Chairs Per Dolly)
- Meets CA 117-E Fire Codes
- Warranty: 5 Yr. Limited Manufacturer

Options

- 1" Thick Seat Foam
- Choice of Fabric or Vinyl
- Arm or Side Chair
- Transport Dolly [KDY-DOLLY]



KDY-DOLLY
TRANSPORTS (8-10) CHAIRS



LMW-This product is covered by a limited manufacturer warranty only, exclusions may apply.

MILL BROOK INDUSTRIES, INC.

MBI's Seating incorporates features that give you comfort, durability, value, and style.

Standard Vinyl's/Fabrics



9301-Navy

Vinyls:

Material:
PVC Skin/Polyester Non-Woven Back

Weight:
18 oz. Per Lineal Yard

Flammability:
CA Bulletin 117, Section E; UFAC Class 1;
BIFMA Class F-1



9202-Ebony



9607-Red



9107-Yellow



9705- Green



9704-Hunter



9305-Blue



9402-Light Grey



9106-Brown



9703-Forest



9403-Grey



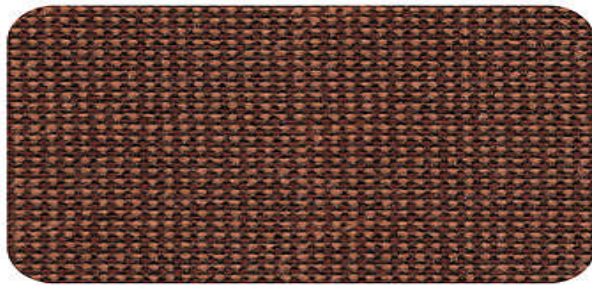
9102-Almond



9302-Wedgwood



9602-Port



1207-Wine

Guilford of Maine- Style 6600:

Material:
100% POLYPROPYLENE

Weight:
8.8 oz. Per Lineal Yard

Abrasion:
Exceeds 30,000 Double Rubs
(Wyzenbeek)

Flammability:
CA Bulletin 117, Section E;
CS-191-53, Class 1; BIFMA FF1-78;
NFPA 260-89; UFAC, Class 1

Treatment:
BLOCKaide™



1101-Spice Brown



1102-Brown



1202-Burgundy



1203-Dark Burgundy



1201-Cabernet



1302-Blue



1304-Navy Blue



1501-Grey



1502-Charcoal



1504-Black



1303-Denim



1405-Jade